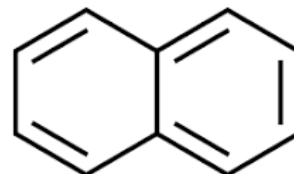


Crude Naphthalene

Product Name	: Crude Naphthalene
Chemical Name	: Bicyclodeca-1,3,5,7,9-Pentaene
EINECS #	: 214-552-7
Empirical Formula	: C ₁₀ H ₈
Molecular Weight	: 128.17



CAS No	91-20-3
Form	Flakes or Molten
Moisture content.	0.1% max
Purity	95% min
Sulphar	0.5 max
Water	0.1% max
Ash.	0.05% max
Solubility	Alcohol, Chloroform, Benzene, Toluene
Water	0.1% Max
Ash	0.05% Max

Disclaimer

The product incorporated and solid is without warranty expressed or implied, including warranty of merchantability and fitness for use of this material and upon condition that purchaser shall make their own test to determine the stability and quality of the product for their particular purpose. The user assumes all risks of use and handling, whether or not in accordance with any statement of the supplier. Suppliers' liability of any type, for any action arising out of the material being supplied, shall be limited to only replacement of materials.